



**\*Please read safety instructions before starting. Always have a qualified electrician install kits.**

**STEP 1:** Turn off power and remove the lamps and ballast cover. Disconnect the incoming power from the ballast, trim the tombstone wires, and remove the ballast if desired or required by code. Fluorescent lamp holders (Tombstones) may remain in place.



**STEP 2:** Place the Magnilumen Plus magnetic driver into the fixtures, and ground driver. Where required, driver and bars may be permanently affixed to the fixture with self-tapping screws provided.



**STEP 3:** Apply the retrofit sticker.



**STEP 4:** Connect the new driver to the incoming power.



**STEP 5:** Select the wattage on the driver DIP Switch. See detailed instruction on reverse side of sheet for how to select and change your wattage. Default wattage is set as per kit part number.



**STEP 6:** Select the color temperature on the magnetized switch on harness (Color Selectable versions only). See color kelvin temperature suggestion chart in kit.



**OPTIONS:** 35K, 40K, 50K (retail packs only)

**STEP 7:** Magnets are built-in for easy installation. Magnet holders also slide out. To permanently adhere to the fixture use self-tapping screws provided. When required by code or is fixture is not constructed from steel.



**STEP 8:** Place the magnetized LED bars into the fixture evenly and align with existing lamp sockets/tombstones. Use self-tapping screws where required. LED Pre-Wired bars "Plug and Play" connection whips should face the same direction that the driver harness is coming out of the ballast cover for connection.



**STEP 9:** Replace the ballast cover and connect the wire harness so it is accessible through the end of ballast cover. Make sure all harness wires are not in contact with sharp metal edges.



**STEP 10:** Connect the plus and play harness to the Pre-Wired LED bars.



**STEP 11:** Turn on the power to test the newly retrofitted fixture.

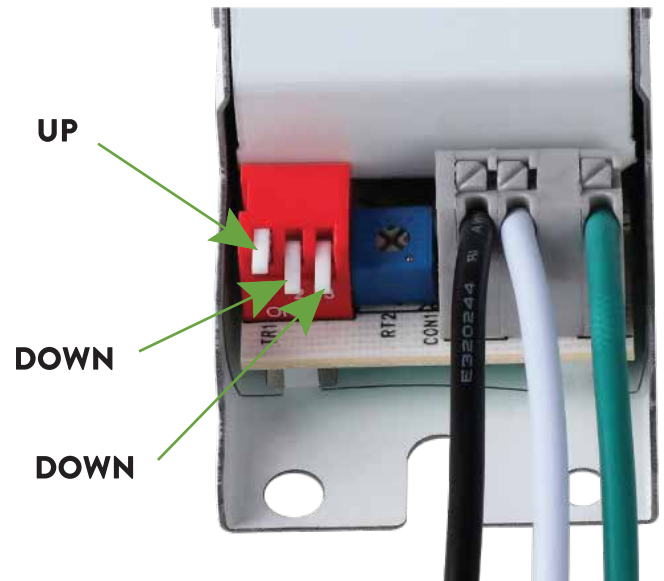


**STEP 12:** Installation is complete.



**HOW TO USE THE DIP SWITCH ON DRIVER**  
**EXAMPLE - 20 WATT DRIVER SWITCH SELECTION CHART**  
**NO.1 - NO.3 CHANNEL SWITCH OUTPUT CURRENT**

Pin	Iout	Vout	1	2	3
8W	0190mA	38V	UP	UP	UP
10W	0240mA	38V	DOWN	UP	UP
14W	0320mA	38V	UP	DOWN	UP
16W	0370mA	38V	UP	UP	DOWN
18W	0410mA	38V	DOWN	UP	DOWN
20W	0470mA	38V	UP	DOWN	DOWN
22W	0510mA	38V	DOWN	DOWN	DOWN



**DRIVER WATTAGE POWER SELECTABLE OPTIONS**

Wattage selectable options allow the end user to adjust lumen output to their specific needs.

DEFAULT WATTAGE	WATTAGE POWER SELECTABLE OPTIONS
20W	8W, 10W, 14W, 16W, 18W, 20W, 22W
30W	10W, 16W, 20W, 24W, 28W, 30W, 32W
40W	24W, 28W, 30W, 32W, 38W, 40W, 42W
50W	25W, 30W, 38W, 40W, 45W, 50W, 52W
60W	40W, 45W, 50W, 55W, 57W, 60W, 62W
100W	65W, 70W, 75W, 85W, 90W, 95W, 100W



Toolless Wattage Selectable Switch (red switch)

- Setting info on driver and website.

# SUGGESTED FIXTURE LUMENS CHART FOR MAGNILUMEN PLUS RETROFITS

WATTAGES	150 lm/W with Frosted Lens		WATTAGES	170 lm/W with Clear Lens		WATTAGES	180 lm/W with No Lens	
	MAGNILUMEN PLUS	SUGGESTED FIXTURE		MAGNILUMEN PLUS	SUGGESTED FIXTURE		MAGNILUMEN PLUS	SUGGESTED FIXTURE
8W	1,200		8W	1,360		8W	1,440	
10W	1,500		10W	1,700		10W	1,800	
14W	2,100		14W	2,380		14W	2,520	
16W	2,400		16W	2,720		16W	2,880	
18W	2,700		18W	3,060		18W	3,240	
20W	3,000	2'x2'	20W	3,400	2'x2'	20W	3,600	2'x2'
22W	3,300							
24W	3,600							
25W	3,750							
28W	4,200		28W	4,760		28W	5,040	
30W	4,500		30W	5,100		30W	5,400	
32W	4,800	2'x4' (8-10')	32W	5,440	2'x4' (8-10')	32W	5,760	2'x4' (8-10')
34W	5,100							
35W	5,250							
38W	5,700		38W	6,460		38W	6,840	
40W	6,000	2'x4' (10' and above)	40W	6,800	2'x4' (10' and above)	40W	7,200	2'x4' (10' and above)
42W	6,300							
45W	6,750		45W	7,650		45W	8,100	
47W	7,050		47W	7,990		47W	8,460	
50W	7,500	Low Bay	50W	8,500	Low Bay	50W	9,000	Low Bay
52W	7,800							
55W	8,250		55W	9,350		55W	9,900	
57W	8,550		57W	9,690		57W	10,260	
60W	9,000		60W	10,200		60W	10,800	
62W	9,300		62W	10,540		62W	11,160	
65W	9,750		65W	11,050		65W	11,700	
70W	10,500		70W	11,900		70W	12,600	
75W	11,250		75W	12,750		75W	13,500	
85W	12,750		85W	14,450		85W	15,300	
90W	13,500		90W	15,300		90W	16,200	
95W	14,250		95W	16,150		95W	17,100	
100W	15,000	High Bay	100W	17,000	High Bay	100W	18,000	High Bay

These are suggested lumen fixture packages based upon photometrics and manufacturers experience. Vital decisions may vary based on actual criteria.